

SWEET SERENITY

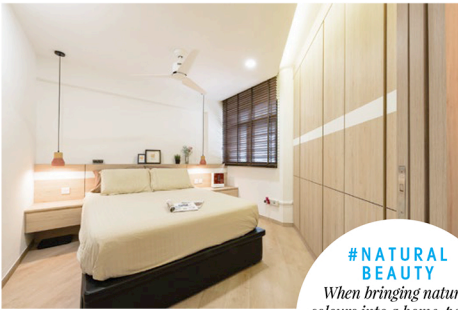
Evoking a quiet and relaxed quality, this four-room apartment employs woodwork elements and contemporary furnishings to result in a cosy personal haven for a family of four



FACT FILE

- SPACE** 4-room HDB unit
- SIZE** Approx. 1,000 square feet
- LOCATION** Clementi Ave 3
- HOME TO** 2 adults, 2 children
- DESIGNER** Samuel Lee from Dreamcatcher Interior Design
- RENO PERIOD** 7 weeks

Dreamcatcher Interior Design is a professional design agency that specialises in residential and commercial renovation services. The team of highly creative and innovative designers possess diverse knowledge to blend creativity with upcoming and current design trends to create luxurious and innovative homes. As firm believers that every single project has its specific needs and budget, the company relies on professional knowledge and personal experiences to help homeowners plan and realise their dream spaces.



#NATURAL BEAUTY

When bringing natural colours into a home, pair it with lighter backgrounds to create an interior that is both cosy and easy on the eye.

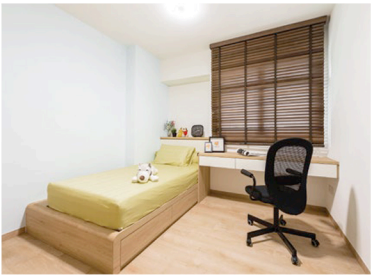
< LIVING

For their home renovation, the owners of this four-room flat requested Samuel Lee of Dreamcatcher Interior Design to create a cosy Muji-inspired home that offers plenty of storage while being kid-friendly for their two young children. To do so, the original tiled flooring was first overlaid with vinyl. Next, the designer then installed a plethora of storage units in the living room. In the form of a full-height cabinet and a television console, the clever use of white and wood laminates further enhances the cottage ambience of the home.



< DAUGHTER'S BEDROOM


An extension from the customised bed frame, the wall-hung study desk's streamlined look lends to the room's overall spacious feel. As a safety precaution, the sharp corners of the frame were filed into a rounded edge so as to prevent the young occupant from nicking herself. Meanwhile, the headboard was converted into a flip-down cabinet, effectively upping the storage solutions available.



^ MASTER-CUM-JUNIOR BEDROOM

With the partition wall between the two bedrooms already hacked, Samuel installed a set of retractable doors to allow the spaces to have privacy from each other when needed. While the positioning of the wardrobe directly in front of the bed may be seen to make the space feel cramped, it was intentionally done as such to allow the homeowners a more spacious floor area for their workout activities.

DREAMCATCHER INTERIOR DESIGN

43 McNair Road Townerville, Singapore 328535
Tel: 6291 4869 Email: enquiry@dreamcatcheridsg.com  DreamcatcherIDsg